

# Magneti Marelli 2.5bar MAP Sensor PRT06



**Brand:** Magneti Marelli

**Product Code:** PRT06

**Availability:** In Stock

**Weight:** 0.10kg

**Dimensions:** 5.00cm x 5.00cm x 2.00cm

**Price: \$159.50**

## Short Description

The PRT xx series are high accuracy, high reliability analog absolute pressure sensors. The PRT03/04 has a pressure range of 20-250kpa (0.2- 2.5BAR).

## Description

Each pressure sensor exploits the piezoresistive properties of silicon devices. The sensing element is a Wheatstone bridge located on a mechanically-shaped silicon chip. A thick film hybrid circuit for signal amplifying is included in the same package. The same circuitry provides thermal compensation and noise reduction. These active devices are housed in hermetically sealed plastic protective casings.

## Technical Data

Technical data

Mechanical Characteristics

Dimensions (maximum) .....76,5x65.0x32.0 mm

Nozzle diameter .....4.7 mm

Weight .....42.0 g

Connector .....Mini-Timer 3 ways

## Electrical Characteristics

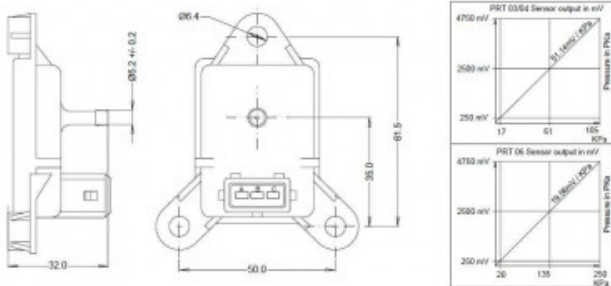
Power supply .....5.00 Vdc  $\pm$ 0.5  
 Min pressure output (at 5 Vdc supply) .....0.25 V  
 Full scale output (at 5 Vdc supply) .....4.75 V  
 Output impedance..... less than 10 W

## Performance

Pressure range:

PRT 06 ..... 20  $\div$  250 kPa  
 Operating temperature range..... -40  $\div$  125 °C  
 Response time .....less than 2 ms  
 Accuracy (from nominal values) ..... 1 % f.s.o.  
 (including non-linearity, hysteresis and repeatability)  
 Over pressure..... 200 %

## Product Gallery



### Connector Pin Out

PIN	description
A	+ 5 Vdc
B	GND
C	Signal OUT

